

New Faculty Orientation

Rajiv Gupta

Associate Dean, Academic Personnel

Friday, November 8, 2024



Marlan and Rosemary Bourns
College of Engineering

Land Acknowledgement

We would like to respectfully acknowledge our responsibility to the original and current caretakers of this land, water, and air.

The Cahuilla, Tongva, Luiseño, and Serrano peoples and all of their ancestors and descendants, past, present, and future.

Today the UCR campus is home to many Indigenous peoples from all over the world, including UCR faculty, students, and staff, and we are grateful to have the opportunity to live and work on these homelands.

Welcome, New Faculty

Yuanhong Zhu

Assistant Professor
Mechanical Engineering

Research focus: experimental tools to study fluid-structure interactions, with applications in bio-inspired propulsion and renewable energy harvesting.



Yaofa Li

Assistant Professor
Mechanical Engineering

Research focus: Fluid mechanics, thermal transport, and sustainable energy.



Shahab Vahdat

Assistant Professor
Bioengineering

Research focus: Neural circuits and neurotreatment in ischemic stroke.



Welcome, New Faculty

Electrical & Computer Engineering

Wantong Li

Assistant Professor

Research focus: Intelligent computer architectures and nanosystems.



Olivia Chen

Associate Professor

Research focus: superconductive electronics, qubit control, neuromorphic computing.



Anas Salah Eddin

Associate Teaching Professor

Research focus: Network construction and graph analysis of networks in pediatric epilepsy.





Speaker Agenda

- **Graduate Education**
- **Undergraduate Education**
- **Contracts and Grants**
- **Finance and Business Operations**
- **Marketing and Communications**
- **Computing and Technical Support**
- **Academic Personnel**
- **Q & A**
- **Panelist Session + Lunch**



Goal: Get Connected to BCOE

- Meet colleagues who can facilitate your success
- Learn how their group can help you succeed
- Know who is in each group and what their role is
- Get tidbits of advice to make things as easy as possible

Departments & Programs



Bioengineering

20



Chemical and
Environmental
Engineering

20



Computer Science
and Engineering

43



Electrical and
Computer
Engineering

35



Mechanical
Engineering

31



Computer
Engineering



Materials
Science and
Engineering



Data Science

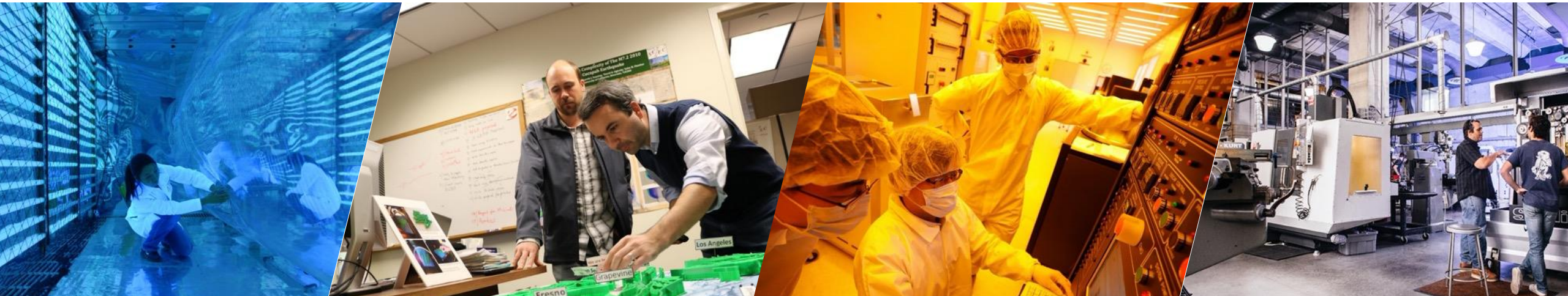


Robotics

BS Programs ABET Accredited through Sept. 30, 2025

Research Centers & Facilities

- Center for Environmental Research and Technology (CE-CERT)
- Winston Chung Global Energy Center (WCGEC)
- Center for Robotics and Intelligent Systems (CRIS)
- Center for Ubiquitous Communication by Light (UC-LIGHT)
- Center for Networked Configurable Command, Control and Communications for Rapid Situational Awareness
- Center for Industrial Biotechnology (CIB)
- Center for Advanced Neuroimaging (UCR-CAN)
- Center for Research and Education in Cyber Security and Privacy (CRESP)
- Energy, Economics, and Environment Research Center (E3)
- Center of Innovative Materials for Energy and Environment (UC-KIMS)





Distinguished Faculty

75+

Fellows of
Professional Societies

57

NSF CAREER Awards
Since 1997

16

Endowed
Professorships



2024 NSF CAREER Award Winners



Ioannis Karamouzas,
Assistant Professor
Computer Science



Elaheh Sadredini,
Assistant Professor
Computer Science



Yan Gu,
Assistant Professor
Computer Science



2024 NSF CAREER Award Winners



Jun Sheng,
Assistant Professor
**Mechanical
Engineering**



Ran Cheng,
Assistant Professor
**Electrical & Computer
Engineering**



Juhong Chen,
Assistant Professor
Bioengineering



Major Awards by Junior Faculty



\$1.77M

Kevin Freedman,
Assistant Professor



\$1.37M

Tingting Xiang,
Assistant Professor



\$1.83M

Ke Du,
Assistant Professor



\$1.47M

Jonathon Realmuto,
Assistant Professor



\$385K

Mingxun Wang,
Assistant Professor



\$3M

Kaveh Laksari,
Assistant Professor





BCOE Rankings

A UNIVERSITY AND COLLEGE ON THE RISE

Top 50

U.S. public research
engineering colleges
U.S. News & World Report, 2024

No. 3

Hispanic STEM
graduates in the nation
National Science Foundation, 2023

No. 28

Computer Science
Institution
U.S. csrankings.org, 2024

BEST RETURN ON INVESTMENT

Top 40

Best Engineering Schools
by Salary Potential
Payscale.com, 2023

No. 6

Public Universities
Making an Impact
Princeton Review, 2024

5 Stars

Quality education,
affordability & outcomes
Money Magazine's Best Colleges, 2024

Facts & Rankings | Marlan and
Rosemary Bourns College of
Engineering (ucr.edu)



Marlan and Rosemary Bourns
College of Engineering



UCR is on the Rise

UC Riverside is a new member of the **Association of American Universities**



Association
of American
Universities

Inquiry · Innovation · Impact

An aerial photograph of a university campus at dusk. A tall, slender clock tower stands prominently in the center. The campus is surrounded by trees and various buildings. In the background, a range of mountains is visible under a twilight sky with soft clouds. The entire image has a blue color overlay.

Welcome to BCOE!

BCOE Research and Graduate Education

Matthew Barth

Associate Dean, Research and Graduate Education



Marlan and Rosemary Bourns
College of Engineering

Graduate Students are the engine of University Research

Graduate Program Contacts:

- **Department Chairs:**
 - Always willing to help
 - Often very busy
- **(Faculty) Graduate Advisors:**
 - Typically one advisor for admissions, one advisor for enrolled students; some departments have a single person for both
 - Work with chairs, college, and graduate division
- **Staff Advisors:**
 - In the trenches, they know all the graduate student operational details
 - Excellent first place to start

Note that grad students are unionized, we need to follow specific procedures

Graduate Faculty and Staff Advisors (2024)

Program	Faculty for Admissions	Faculty for enrolled students	Staff Advisor
BioEngineering	Iman Noshadi	Hyle Park	Manuel A Perez
Chemical & Environ. Eng.	Georgios Karavalakis	Yujie Men	Adrienne Thomas
Computer Science & Eng.	Marek Chrobak	Marek Chrobak	Vanda Yamaguchi
Computer Engineering	Daniel Wong	Daniel Wong	Eva Valencia
Electrical and Computer Eng.	Nanpeng Yu	Nanpeng Yu	Paul Talavera
Mechanical Engr.	Bhargav Rallabandi	Chen Li	Joaquin Barraza
Materials Science & Eng.	Ruoxue Yan	Richard Wilson	Genevieve Vasquez
Robotics	Fabio Pasqualetti	Fabio Pasqualetti	Paul Talavera
Computational Data Science	Vassilis Tsotras	Vassilis Tsotras	Vanda Yamaguchi

Graduate Student Recruitment Timeline

- **Application Deadlines:** (see <https://graduate.ucr.edu/deadlines>)
 - January 5th for offers with financial aid
 - June 1st for domestic students (admission only)
 - June 1st for international applications (admission only)
- **Applications arrive centrally, sent to the departments**
 - Departments usually have spreadsheet of applicants
 - Departments admit/reject, college then approves applications
- **Grad Student (with fellowships):**
 - Acceptance Deadline: ~April 15th
 - Grad students without fellowships: we are flexible with acceptance

Note that some independent grad students may be available right away

Financial Aid for Ph.D. Admits

- **1st two quarters are covered by campus fellowship**
 - Faculty don't incur costs in the first year (grad division, BCoE, TA)
 - Fellowship details are tailored by departments, depending on qualifications
 - These fellowships can sometimes be used as grant cost share
 - In 2025, there will be fellowship allocation limits for each department (due to budget limitations)
- **TA-ship**
 - TA-ships are available to grad students on a quarter-by-quarter basis
 - Often these are part of the grad student offers
 - Talk to the graduate staff advisors if you want your student to have a TA-ship
 - In 2025, TA-ships will be limited due to budget limitations
- **Other Fellowship Opportunity exist**
 - Grad division, BCoE, departments, external

Research Proposals & Funding

- **Proposal Submission Process (Pre-Award)**

- College office provides support (BCOE C&G office):
- Huguette Albrecht halbrecht@engr.ucr.edu
- Brandon Reese breese@engr.ucr.edu
- Aimee Anaya aanaya@engr.ucr.edu
- CE-CERT and WCGEC: Lucila Rojo lrojo@cert.ucr.edu ; Sara Connor sconnor@cert.ucr.edu
- For large, multiple investigator grant proposals: Benjamin Stewart bstewart@ucr.edu

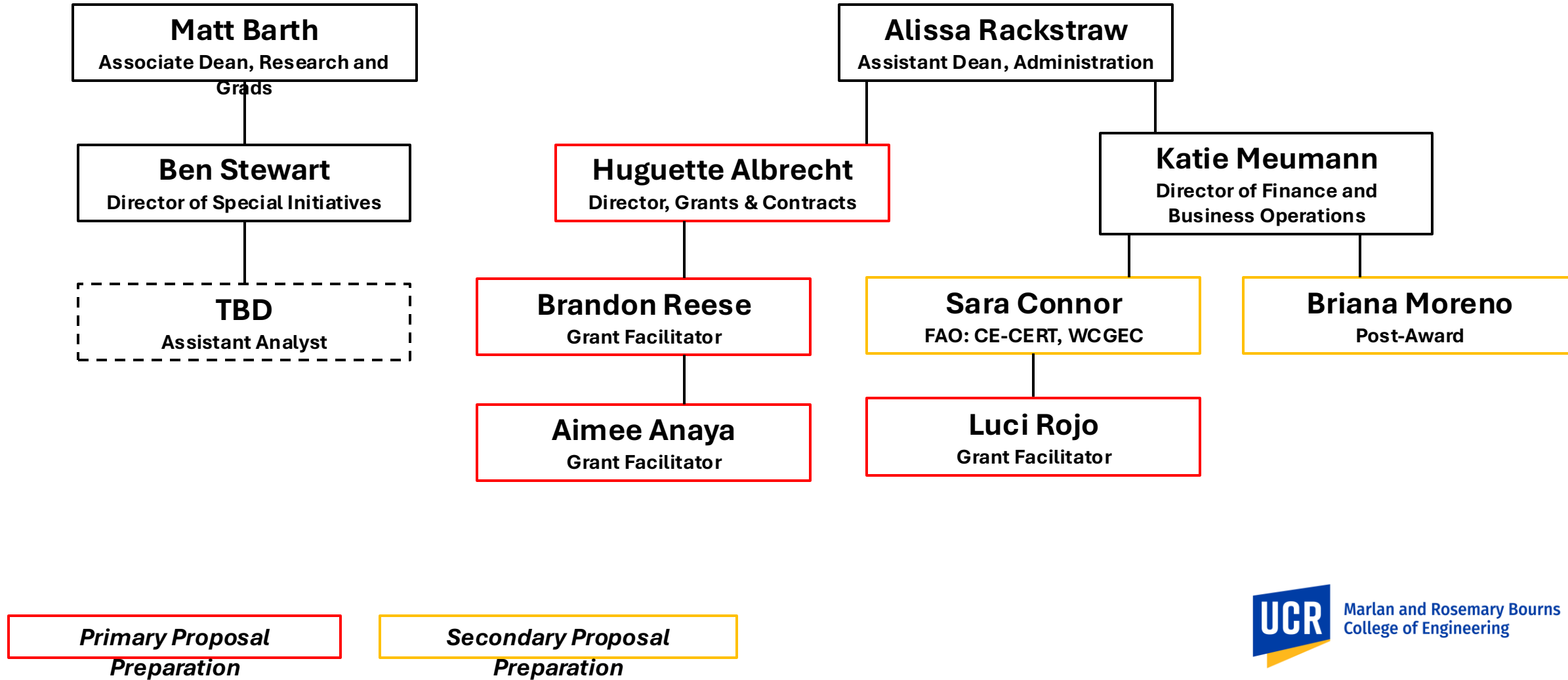
- **Office of Research and Economic Development (RED)**

- This office is solely authorized to submit and accept proposals/awards
- Tech Transfer Office
- Non-Disclosure Agreements (NDAs)

- **Post-Award:**

- Post-award administration is handled by your department's administrative cluster
- Expenditure tracking
- Staffing, payroll, travel, contract/grant reports, etc.

Pre-Award Organizational Structure



Research Proposals Process



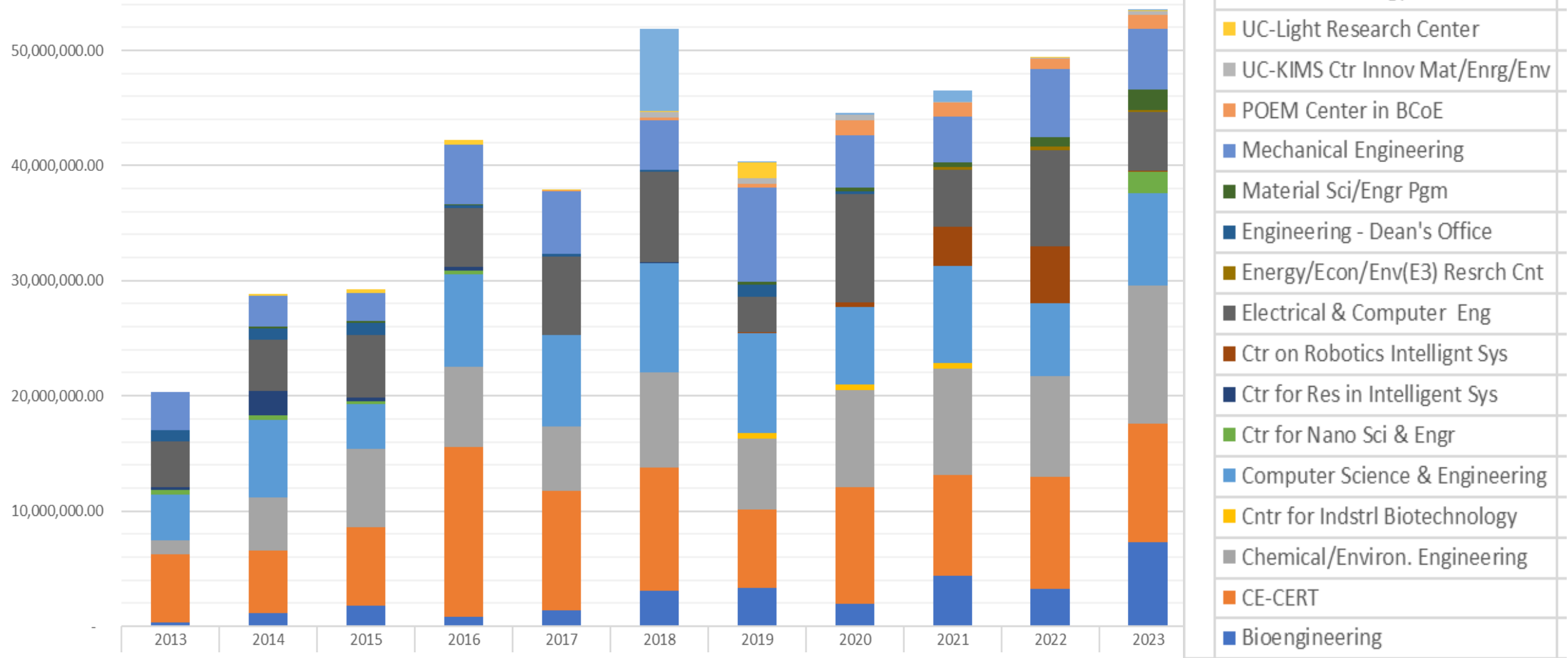
Cost Share

- **BCoE has detailed cost share policies and procedures**
 - **Please share this with investigators that want to do cost-share**
- **All cost share letter requests need to get associate dean signature**
- **Cost share is tracked per investigator**

PI-by-Exception

- **BCoE allows PI-by-exceptions**
- **Each proposed project needs to be approved by associate dean**

BCOE Research Awards



BCOE Research Centers

(all shapes and sizes)

- **Center for Environmental Research and Technology (CE-CERT)**
- **Center for Industrial Biotechnology (CIB)**
- **Center for Networked Configurable Command, Control and Communications for Rapid Situational Awareness (NC4)**
- **Center for Robotics and Intelligent Systems (CRIS)**
- **Center for Research and Education in Cyber Security and Privacy (CRESP)**
- **Center for Ubiquitous Communication by Light (UC-LIGHT)**
- **Energy, Economics, and Environment Research Center (E3)**
- **Center for Data Science (CDS)**
- **Winston Chung Global Energy Center (WCGEC)**
- **Center of Innovative Materials for Energy and Environment (UC-KIMS)**
- **Center for Superconductive Quantum Electronics (CSQE)**

Why Centers?: Resources, facilities, collaboration, name recognition, bigger awards, etc.



Marlan and Rosemary Bourns
College of Engineering

Matthew Barth

Associate Dean, Research and Graduate Education

barth@ucr.edu

951-827-2992

WCH 454

CE-CERT 121



Marlan and Rosemary Bourns
College of Engineering



Welcome to the

**Marlan and Rosemary Bourns College
of Engineering!**

We Engineer Excellence

Welcome New Faculty

Huinan Hannah Liu

Professor of Bioengineering, the Stem Cell Center, and the Materials Science and Engineering
Associate Dean of Student Academic Affairs



Marlan and Rosemary Bourns
College of Engineering

Advising (OSAA team)

Petitions
Learning community
Graduation planning
Support students

Office of Student Academic Advising (OSAA) Team



Roderick Smith
Director



Terri Phonharath
Asst. Director, DTSE



Oswaldo Osuna
Enrollment



Kimberly Wolf
Curriculum Planner



Vicente Velazquez-Gamboa
Enrollment



Malcolm Manuel
Mechanical Eng. & MSE



Maletina Lolesio
Mechanical Eng.



Michael Cruz
Comp Sci, CSBA,
Compt. Engr



Desmond Harvey
Chemical &
Environmental
Engineering



Rachel Segura
Comp Sci, CSBA,
Compt. Engr



Cindy Aguilar
Bioengineering



Joceyln Catano
Comp Sci, CSBA,
Compt. Engr



Grecia Alfaro
Comp Sci, CSBA,
Compt. Engr



Thomas McGraw
Electrical
Engineering

Office of Student Academic Affairs

MISSION – acting on behalf of the BCOE and its departments, the advising office *supports engineering students in achieving their full academic potential* by providing guidance and services which enhance students academic development.

**The first line of contact regarding
academic concerns and opportunities!!!**

**REFER STUDENTS TO BCOE OFFICE OF STUDENT
ACADEMIC AFFAIRS ON ALL ACADEMIC AND ENROLLMENT
CONCERNS!!!!!!**

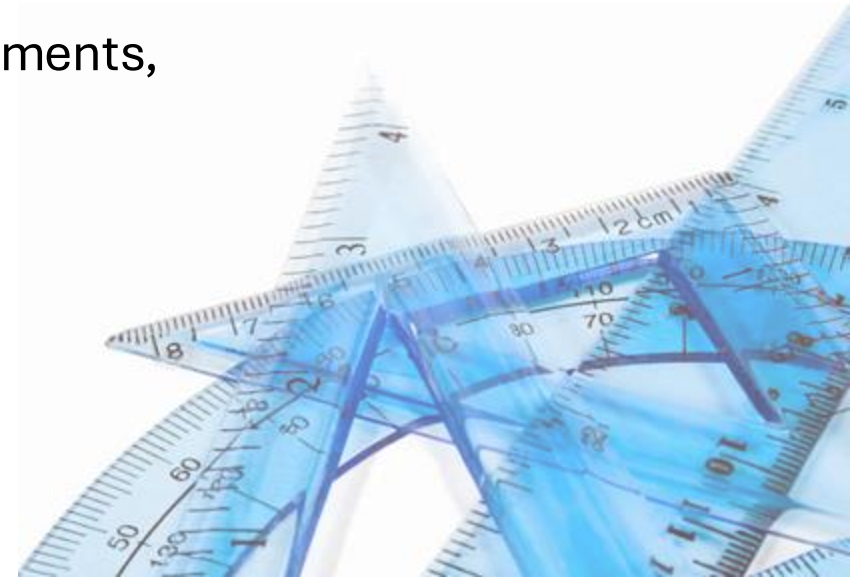
Short list of what we do

Advise and Mentor

We advise and mentor students on academic matters, support their success, academic and personal growth. We are generally the first line of contact regarding academic concerns.

Enforce Policy

Uphold academic policies of the university, BCOE, and its departments, explain policies, communicate options to students.



Things we do to support Departments and Faculty

Course Scheduling--Working with the Chairs, we develop the course schedule for all undergraduate programs.



Enrollment Management--We monitor enrollment ensuring compliance with policy; we manage concurrent enrollment, and all forms of adding and withdrawing from courses.

Working together... We Engineer Excellence

Student Success Support

**BCOE Transfer Center
Engineering Career Development
Undergrad Research and Internships**



Guadalupe Ruiz
Director of
Student Success
Center &
Professional
Development



Fernanda Rojas
Professional
Development
Coordinator,
Student Orgs.



Mai Temraz
Student Success
Coordinator,
Undergrad Research
Programs

Resume &
Interview
Skill
Workshops

Career Info
Session
featuring
Engineering
Companies

Job
Searching
Techniques
Workshop

Guest
Speakers
Panel

Visits &
Tours at
Engineering
Companies

Graduate &
Professional
School Info
Sessions

FE/EIT/PE
Training
& Info
Sessions

STEM &
Engineering
/ Technical
Career
Fairs

And More!

<https://transfer.engr.ucr.edu/> - Engineering Transfer Student Center
Students Orgs - <https://bcoelc.com/organizations>

Our Students

Impact Factor vs. Impact

Always keep in mind:

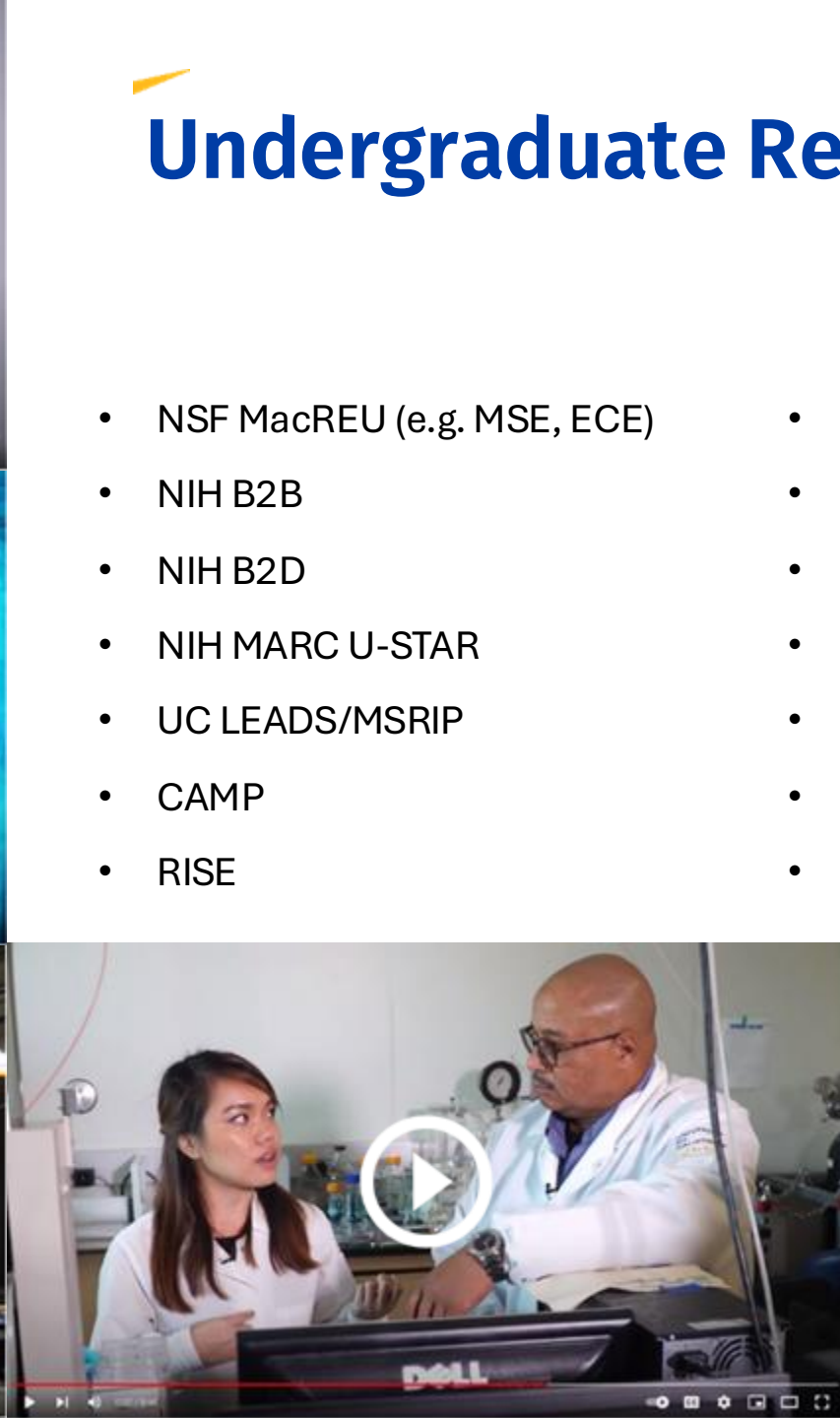
- you are a role model
- you are a mentor
- likely the first person with advanced degrees that they interact
- you can make a difference in many lives

Undergraduate Research – Invaluable for student.

What is there for you?

At the very least:

- needed assistance in the lab
- possible verified graduate student
- publications, visibility



Undergraduate Research Programs

- NSF MacREU (e.g. MSE, ECE)
- NIH B2B
- NIH B2D
- NIH MARC U-STAR
- UC LEADS/MSRIP
- CAMP
- RISE
- CIRM RAMP & STRIDE
- HSI Summer Bridge
- UC-Mexico Program
- Medical Scholars Research Program
- Mini-grant for Undergraduate Researchers
- Chancellor's Research Fellowship
- **NSF STEM Scholars**



Undergraduate Research – Invaluable for student.

What is there for BCOE?

Our recruitment tool: freshmen, transfer, GPP,
international - what makes us different in their eyes.

Involvement (Service)

With university: Undergraduate Journal, Mini Grants, Undergraduate Research Symposium, major scholarship application preparation (Fulbright, Goldwater,...)

With community: RUSD Science Fair – (mentoring, judging, presenting), MS/HS Science Project Mentoring, MS/HS Teachers in the lab... - very valuable activities and connections for your grants

Outreach & Pathway Team: MESA Program



Carlos Gonzalez
Director



Vanessa Guzman
MESA Program
Coordinator



Ruth Arriaga
BCOE Outreach
Coordinator

MESA California Contact Information

<https://ucrmesa.weebly.com/>
(participant site)

<https://mesa.engr.ucr.edu/>

<https://mesa.ucop.edu>
(statewide program site)

Director: Carlos Gonzalez carlosg@engr.ucr.edu

Mission Statement (MESA California)

"MESA enables educationally disadvantaged students to prepare for and graduate from a four-year college or university with a math-based degree in areas such as engineering, the sciences, computer science, and mathematics..."

- Our Outreach/Connection with Local Schools
- (K-12 schools and community colleges)
- Engaging and enriching STEM opportunities for our region's underserved students...
- Serve 30+ Schools in Inland Empire (Riverside and SB county)
- Collaborate with other pre-college campus outreach units: Trio, Upward Bound, SOM pathway





Thank You

America's Fastest Rising Ranked University



@UCRBCOE | #UCRBCOE



QUESTIONS?

The BCOE Contracts and Grants Office (C&G Office)

Brandon Reese, Grant Facilitator

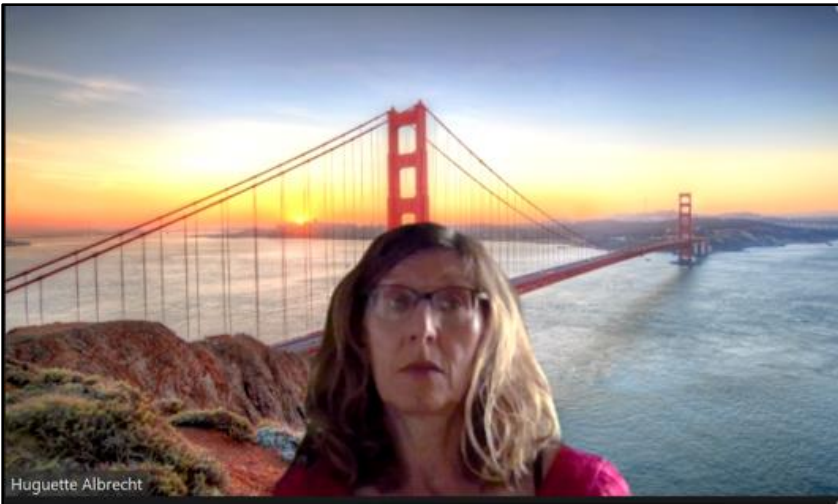
November 8, 2024



Marlan and Rosemary Bourns
College of Engineering

The BCOE C&G Office: your shop for anything pre-award

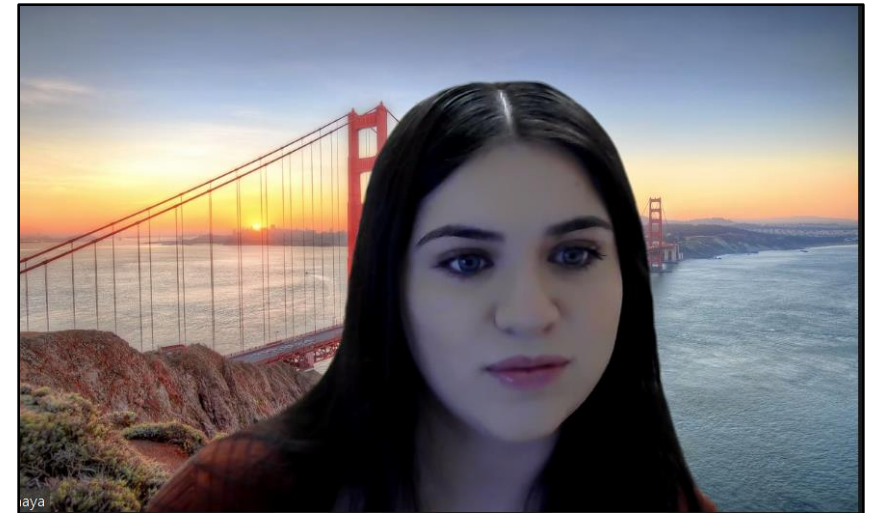
The team



Huguette Albrecht
halbrecht@engr.ucr.edu



Brandon Reese
breese@engr.ucr.edu



Aimee Anaya
aanaya@engr.ucr.edu



Presentation Overview

1. Terminology and acronyms
2. What we do
3. Kualu Research
4. Timeline for submission of proposals to RED
5. Proposal preparation summary



Some terminology and acronyms that are commonly used in pre- and post-award contexts

RED: Research and Economic Development Office

SPA: Sponsored Programs Administration

SPO: Sponsored Programs Office

KUALI Research: Campus proposal submission tracking and Approval system

AOR: Authorized Organizational Representative

Sponsor: The entity providing the funds

Prime: Project lead (prime applicant) or sponsor lead (prime sponsor)

DC: Direct costs (what goes to you)

IDC: Indirect costs (what goes to the institution), or F&A: Facilities and Administrative costs, or Overheads



What we do (1)

We work on anything related to pre-award, including:

- Advertise funding opportunities relevant to BCOE faculty
- Provide advice on building a funding portfolio
- Discuss potential submissions with you
- Assist with preparing proposals
- Submit proposals to RED (tracked via KUALI)
- Pre-award budget revisions and just in time (JIT) documents preparation



What we do (2)

Help with preparing proposals includes:

Always:

- Read the solicitations
- Develop budgets and budget justifications
- Collect all the proposal documents and upload them to the submission portals
 - NSF: Research.gov (you create the proposal and give us access)
 - Other Funding Agencies: Grants.gov (Cayuse)
 - PI submits after having received approval from RED
- Review the proposal components for compliance
- Prepare KUALI boards for proposal submissions to RED

Sometimes (proposal type and time):

- Provide proposal checklists and/or project description outlines and templates
- Perform technical editing



KUALI Research

UC Riverside uses KUALI Research to track all the activities related to external funding.

When you apply for funds via UC Riverside, The Regents of the University of California are usually the applicants and therefore the award recipient.

When is a KUALI board needed?

- Whenever RED is involved
- All proposals except when they're internal to UC Riverside
- Pre-proposals and white papers that have to be submitted via RED

Approving a KUALI board

Step 1—Navigate to the **Key Personnel** tab, then click the arrow (next to the PI's name) to point downward.

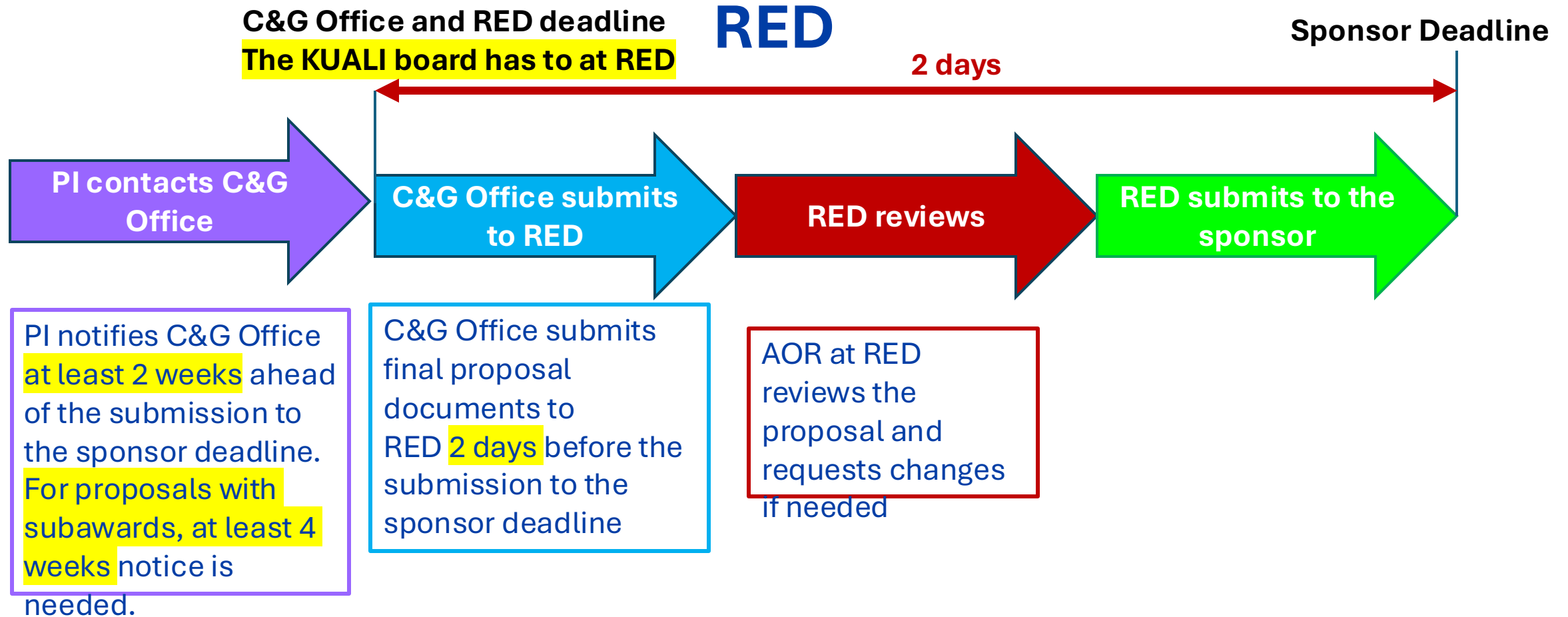
The screenshot shows the Kuali Research interface. On the left, a sidebar contains a menu with items: Basics, Key Personnel (highlighted with a yellow box and a circled '1'), Personnel, Attachments, Questionnaire, Compliance, Budget, Access, Summary/Submit, and Notifications History. The main content area is titled 'Key Personnel' and includes a search bar and an 'Add Personnel' button. Below this, a table lists personnel with a status of '(PI/Contact) (Certification Incomplete)'. A small downward arrow icon is highlighted with a yellow box and a circled '1' next to the PI's name.

Step 2—Click the **Proposal Person Certification** tab and complete the required questions.

The screenshot shows the 'Proposal Person Certification' form. At the top, a tab labeled 'Proposal Person Certification' is highlighted with a yellow box and a circled '2'. Below the tab, the form title 'Proposal Person Certification' is displayed, followed by a 'Clear All Answers' button. The 'Certification' section contains a list of five numbered items for the user to certify. Below this, there are two paragraphs of text for the Principal Investigator to certify. At the bottom, a checkbox labeled 'I have read and certify to the text above' is checked. A yellow box and a circled '3' highlight the 'Save and Continue' button in the footer.

Step 3: Under Summary/Submit, click approve to route the proposal forward

Timeline for preparation and submission of proposals to RED



Exception to the RED 2-day rule

When a proposal isn't ready on time for the RED review, the PI has to send an email to his AOR to request more time and explain why the extra time is needed.



AORs are assigned by departments

Bioengineering: Tim LeFort

CEE: Victoria Sissac

CSE: Victoria Sissac

ECE: Tim Wolfe

ME: Victoria Van Mouwerik

MSE: Tim Wolfe



Grant preparation process summary (1)

For all proposals

- You notify us at least 2 weeks ahead of the sponsor deadline, or more depending on the type of proposal, and share the solicitation with us
- To get started, you provide the project title, performance period (start and end dates), and budget specifications to us
(Equipment is any equipment with a value of \$5,000 and above with at least 1 year lifetime)
- You email us your documents

Grant preparation process summary (2)

For NSF proposals

- You create the proposal in Research.gov and give us access by going to:
 -
 - Manage personnel and subaward organizations
 - Manage Personnel
 - Add Other Authorized User
- You share the proposal with an AOR when the proposal is final and ready for submission → by going to:
 - Proposal – ID
 - Proposal details

Wishing you success with securing funding!



?

Finance and Business Operations

New Faculty Orientation
November 8, 2023



Marlan and Rosemary Bourns
College of Engineering

Meet the Team

Dean's Office



Alissa Rackstraw

Assistant Dean/CFAO, Finance and Administration



Katie Meumann

Director, Financial and Business Operations

Department Financial & Administrative Officers (FAO)



Robert Godoy

Bioengineering & Chemical/Environmental Engineering



Nicole Kramer

Electrical and Computer Engineering & CRIS, E3, & CSQE



Grace Caslavka

Computer Science and Engineering & Computer Engineering Program



Robert Godoy

Mechanical Engineering, Material Science & Engineering & Masters Online



Finance and Administration

- Financial and Budgetary Support
- Post Award Administration
- Purchasing/Procurement
- Faculty Reimbursements
- Travel Administration
- Payroll/Personnel Actions

For financial and administrative applications (Concur, Quali, UCPath, etc.), visit the Rspace portal: rspaceportal.ucr.edu

Each unit has specific members of the team who handle purchasing, travel, payroll, reporting, etc. These team members are part of BECCEMM administrative cluster and CSE/CEN team and they work together to support all of these areas.



Important Reminders

Initial Complement Funds/Start-Up Package

- Managed by Dean's Office; reports come from your unit
- 6 years to spend
- Regular reporting (review and approve)

Internal Allocation Accounts

- Managed by Dean's Office; reports come from your unit
- Established once you have faculty designated funds
 - Academic Year Faculty Salary Savings Allocations
 - Funds for BCOE Appointments including Chairs/Directors and Associate Deans
 - Allocations for Indirect Cost for Indirect Cost Return
 - Allocations for MSOL Incentives

Financial and Business Processes (Travel, Purchasing, Reimbursements, etc.)

- Managed at the department level
- Schedule time to meet with Financial and Administrative Officer to understand UCR policies and procedures

Post Award Administration

- Managed at the department level
- Schedule time to meet with Contract and Grant Analyst to understand the process
- For complex or escalated issues, contact Katie Meumann in the Dean's Office

Suggestions to Consider

- 01** Meet with your departmental staff to become familiar with UCR policies and procedures.
- 02** Don't hesitate to ask questions or raise concerns.
- 03** Be proactive with the administration of your financial resources.
- 04** Plan ahead and solicit support when needed, especially for travel and event. Remember purchases need lead time.

Contacts

| Contract & Grants/Finance | Purchasing/Travel/Events/Meetings | Payroll/Personnel | Grad Student

Department	Tasks	Responsible Staff	Email Address	Primary Back-up Staff
BIEN	Contracts & Grants, Finance	Karina Gallegos	BIENGrants@engr.ucr.edu	Kevin Schulte, Robert Godoy
CEE	Contracts & Grants, Finance	James Martinez	CEEGrants@engr.ucr.edu	Kevin Schulte, Robert Godoy
ECE	Contracts & Grants, Finance	Laura Schulte	ECEGrants@ece.ucr.edu	Nicole Kramer, Robert Godoy
ME	Contracts & Grants, Finance	Julie Garcia	MEGrants@engr.ucr.edu	Kevin Schulte, Robert Godoy
MSE	Contracts & Grants, Finance	Karina Gallegos	MSEGrants@engr.ucr.edu	Kevin Schulte, Robert Godoy
BIEN	Events, Business Meetings, Facilities, Exam printing	Denise Lua	BIENAdmin@engr.ucr.edu	Kate Seo, Joana Godoy
CEE	Events, Business Meetings, Facilities, Exam printing	Denise Lua	CEEAdmin@engr.ucr.edu	Kate Seo, Joana Godoy
ECE	Events, Business Meetings, Facilities, Exam printing	Kaiszia Catchings	ECEAdmin@engr.ucr.edu	Joana Godoy, Nicole Kramer
ME	Events, Business Meetings, Facilities, Exam printing	Kaiszia Catchings	MEAdmin@engr.ucr.edu	Joana Godoy, Nicole Kramer
MSE	Events, Business Meetings, Facilities, Exam printing	Kaiszia Catchings	MEAdmin@engr.ucr.edu	Joana Godoy, Nicole Kramer
BIEN	Travel planning and reimbursements	Kate Seo	BIENAdmin@engr.ucr.edu	Sandra Cuevas, Joana Godoy
CEE	Travel planning and reimbursements	Kate Seo	CEEAdmin@engr.ucr.edu	Sandra Cuevas, Joana Godoy
ECE	Travel planning and reimbursements	Sandra Cuevas	ECEAdmin@engr.ucr.edu	Joana Godoy, Nicole Kramer
ME	Travel planning and reimbursements	Sandra Cuevas	MEAdmin@engr.ucr.edu	Kate Seo, Joana Godoy
MSE	Travel planning and reimbursements	Sandra Cuevas	MEAdmin@engr.ucr.edu	Kate Seo, Joana Godoy
BIEN	Grad Affairs	Vacant	Adrienne@engr.ucr.edu	Adrienne Thomas, Grad Affairs Team
CEE	Grad Affairs	Adrienne Thomas	Adrienne@engr.ucr.edu	Genevieve Vasquez, Grad Affairs Team
ECE	Grad Affairs	Paul Talavera	ECEGradOffice@ece.ucr.edu	Adrienne Thomas, Mario Castro, Nicole Kramer
ME	Grad Affairs	Joaquin Barraza	jbarraza@engr.ucr.edu	Adrienne Thomas, Grad Affairs Team
MSE	Grad Affairs	Genevieve Vasquez	gvasquez@engr.ucr.edu	Adrienne Thomas, Grad Affairs Team
MSOL	Grad Affairs (and all for MSOL)	Kim Love	klove@engr.ucr.edu	Payroll Team, Grad Team, Robert Godoy
BIEN	Personnel, Payroll, Hiring	Trudi Loder	BIENPayroll@engr.ucr.edu	Nicole Kramer, Payroll Team
CEE	Personnel, Payroll, Hiring	Trudi Loder	CEEPayroll@engr.ucr.edu	Nicole Kramer, Payroll Team
ECE	Personnel, Payroll, Hiring	Cory Randle	ECEPersonnel@ece.ucr.edu	Nicole Kramer
ME	Personnel, Payroll, Hiring	Mari Godoy	MEPayroll@engr.ucr.edu	Nicole Kramer, Payroll Team
MSE	Personnel, Payroll, Hiring	Mari Godoy	MSEPayroll@engr.ucr.edu	Nicole Kramer, Payroll Team
BIEN	Purchasing, Purchase reimbursements, Relocations	Deanna Vorhees	BIENPurchasing@engr.ucr.edu	Eva Barriga, Joana Godoy
CEE	Purchasing, Purchase reimbursements, Relocations	Deanna Vorhees	CEEPurchasing@engr.ucr.edu	Eva Barriga, Joana Godoy
ECE	Purchasing, Purchase reimbursements, Relocations	Eva Barriga	ECEPurchasing@ece.ucr.edu	Joana Godoy, Nicole Kramer
ME	Purchasing, Purchase reimbursements, Relocations	Eva Barriga	MEPurchasing@engr.ucr.edu	Deanna Vorhees, Joana Godoy
MSE	Purchasing, Purchase reimbursements, Relocations	Eva Barriga	MSEPurchasing@engr.ucr.edu	Deanna Vorhees, Joana Godoy



Questions?

Contact | Dean's Office Financial Staff

Alissa Rackstraw | 951.827.6417 | Alissa.rackstraw@ucr.edu

Katie Meumann | 951.827.2995 | katie.meumann@ucr.edu



Marlan and Rosemary Bourns
College of Engineering

New Faculty Orientation Fall 2024

Marketing & Communications

Cristina Sanford, Ed.D.
November 8, 2024



Marlan and Rosemary Bourns
College of Engineering



Overview

- **Introduction to the Department**
- **Our Approach to Marketing**
- **Objective Alignment**
- **Where We Spend Our Time**
- **Working Together: How You Can Get Involved**
- **Contact and Resources**
- **Q&A**



Marlan and Rosemary Bourns
College of Engineering

Department Introduction

Marketing & Communications



Cristina Sanford, Ed.D.
Assistant Dean, Strategic Initiatives & Marketing



Roberto Hernandez
Marketing Director



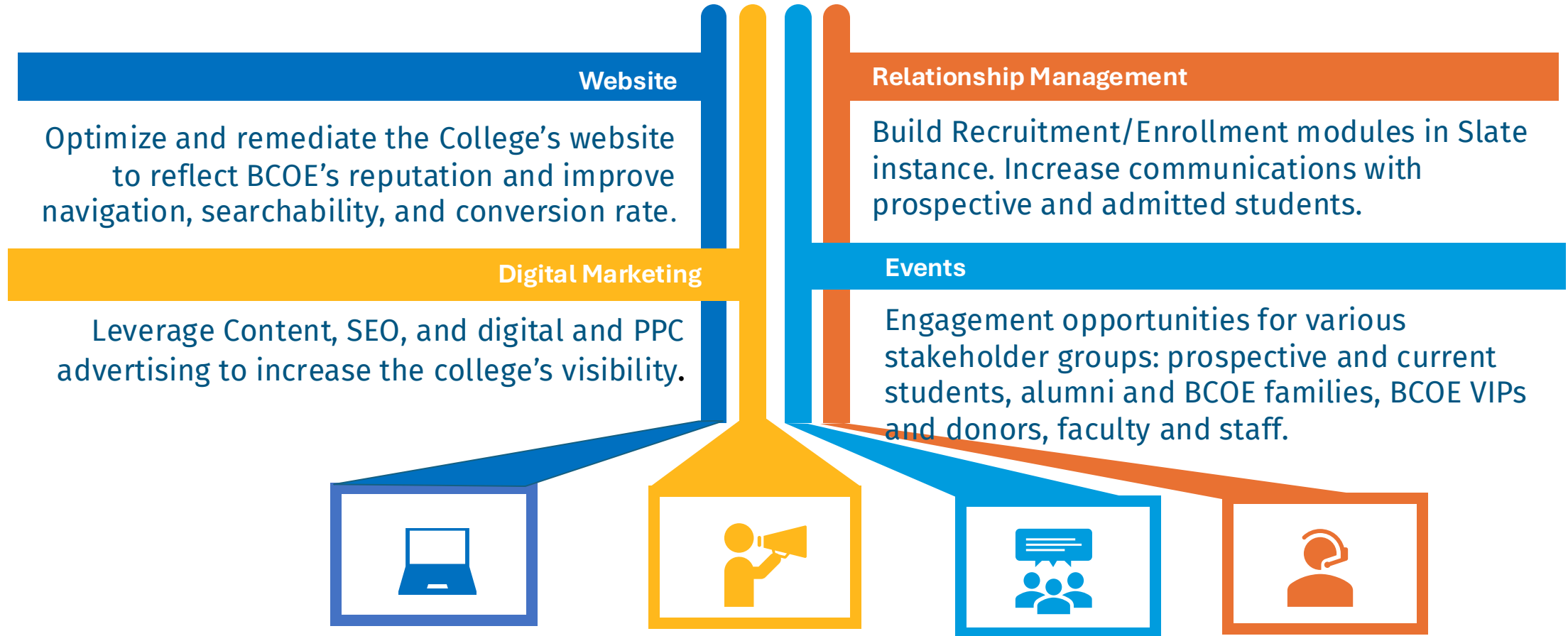
Megan Tomasik
Digital Communications Manager



Hannah Tomlinson
Events Manager

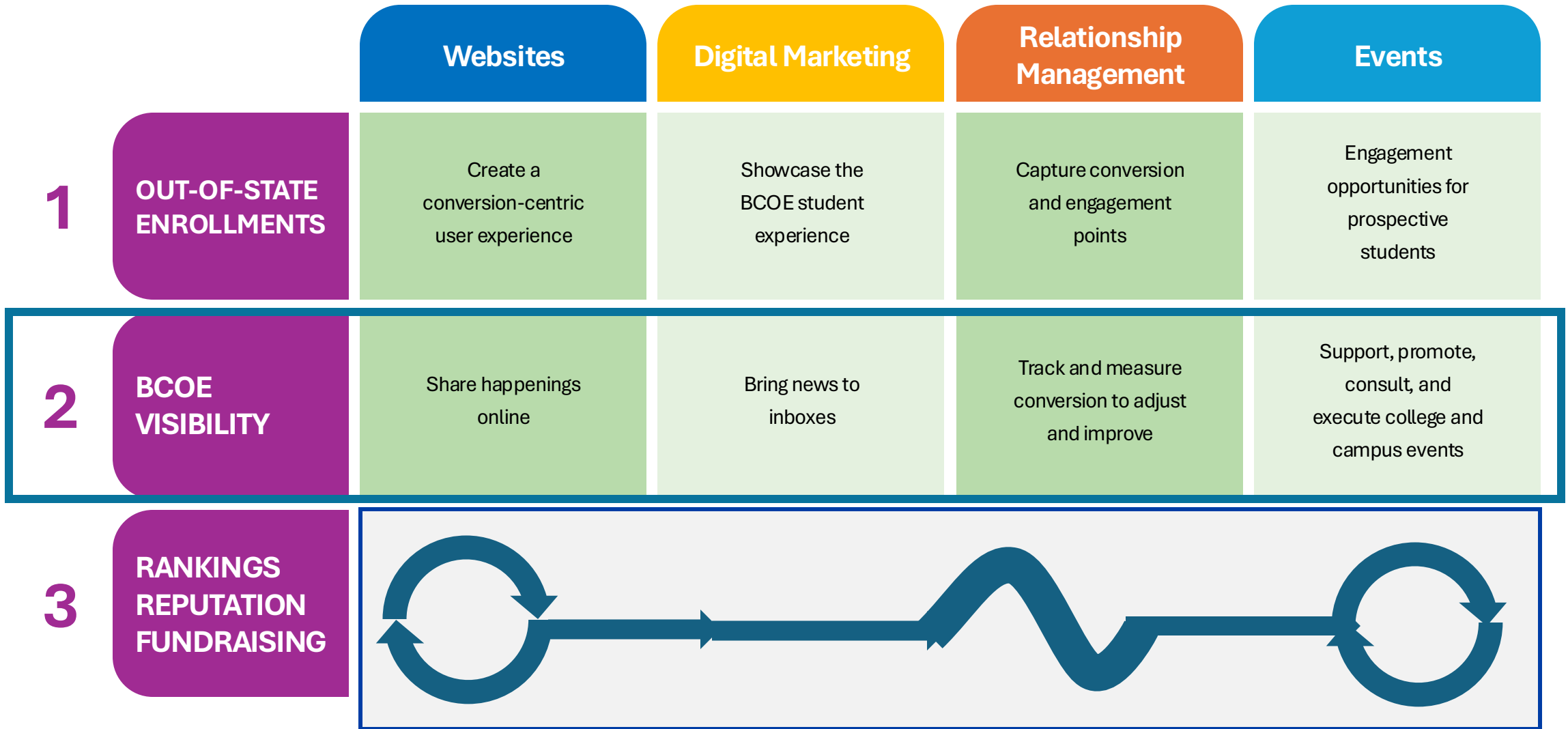


Integrated Marketing & Communications



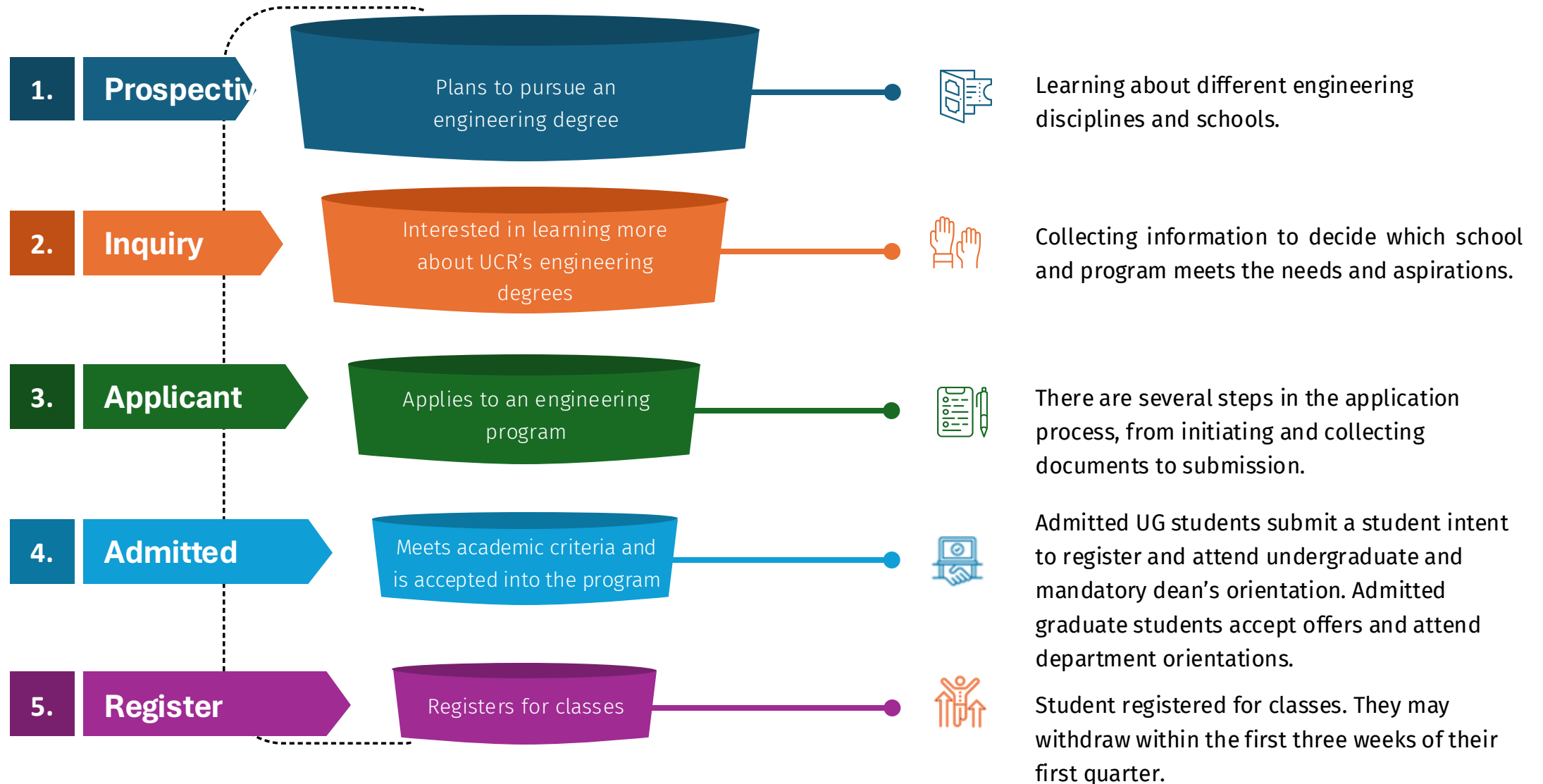
Key Objectives

We don't rise to the level of our goals; we fall to the level of our systems. - James Clear



Enrollment Journey

Intentionally Manage Prospective Student Lifecycle



You are the secret sauce

AI Research Rising
Anis Ray-Choudhury (Electrical and Computer Engineering) and Vimala Thirumala (Computer Science and Engineering) will co-direct the Riverside Artificial Intelligence Research (RAIR) Institute to lead research and applications in this powerful and transformative technology.
[Read more](#)

Major Microbes
Ian Wheeldon (Chemical and Environmental Engineering) will serve as co-director of a new "BioFoundry" lab for the study of extreme microbes — in partnership with UC Santa Barbara and Cal Poly Pomona — that will be established with a \$22 million National Science Foundation grant.
[Read more](#)

Getting Some Fresh Air
Futuring Use (Chemical and Environmental Engineering) will pilot an innovative treatment that will scrub dangerous hydrofluorocarbons — used in refrigeration and air conditioners — from the atmosphere, with support from a \$3.1 million grant from the Environmental Protection Agency.
[Read more](#)

CAREER Opportunities
Six BCOE faculty members received National Science Foundation CAREER awards and funding that will support their projects involving CRISPR technology, agricultural materials, human-robot interactions, data processing, surgical robots, and algorithms structures and parallel processing.
[Read more](#)

Just Dough It
BCOE alum Mike Viana ('10) made the journey from engineer to entrepreneur, leveraging his skills as a mechanical engineer to become a roaster/coffee baker, launch a Riverside-based business, and share his recipe for the perfect sourdough pizza crust with the world.
[Read more](#)

Join the Volta
Matthew Derry (Electrical and Computer Engineering) signs masterclass upgrade to customers' grid to increase the power efficiency of vehicles, buildings, and manufacturing.
[Read more](#)

Making Green Cleaner
Hydrogen engines are better for the environment — but not when pollution levels are high. Matthew Viana (Chemical and Environmental Engineering) has developed a way to reduce nitrogen oxides emitted by these cleaner engines.
[Read more](#)

Repeat Recognition
BCOE's Chemical Engineering Society student member received a distinguished student award for the second year in a row for his excellence in conducting the significance of his research and his contributions to the community.
[Read more](#)

CAREER Award
Six BCOE faculty members received National Science Foundation CAREER awards and funding that will support their projects involving CRISPR technology, agricultural materials, human-robot interactions, data processing, surgical robots, and algorithms structures and parallel processing.
[Read more](#)

UCR Bourns College of Engineering
1,184 followers
2mo • 🌐

🍅 Seeds for tomatoes that were genetically engineered to grow only a few inches in height will be blasting off toward the International Space Station within the next year or two, thanks to research by a team led by Chemical and Environmental ...more



Bourns College of Engineering at UC Rn @UCRBC · Sep 3 **Promote** ...
🍅 As NASA plans future missions to Mars and the Moon, @CEEatUCR's Robert Jinkerson's (@JinkersonLab) team developed a tomato that could be grown in space to feed astronauts. The seeds will later be sent to the International Space Station.
bit.ly/3XmBzAH
#UCRBCOE #UCR



Tomatoes in space: UC Riverside scientists making big strides in mission to gro...

From abc7.com

🗨️ 🔄 ❤️ 📊 66 📌 📎

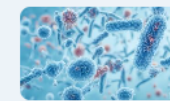
UCR Bourns College of Engineering
1,184 followers
1mo • 🌐

🌱 Chemical and Environmental Engineering's **Ian Wheeldon** is a co-principal investigator for a cutting-edge "BioFoundry" lab that will study extreme microbes and tap this knowledge for applications ranging from the biosynthesis of fuels to the bioremediation of polluted water and soil. This project is supported through a \$22 million grant from the [National Science Foundation \(NSF\)](#), is collaboration between [University of California, Riverside](#), [California State Polytechnic University-Pomona](#), and [UC Santa Barbara](#).

Read more 📖

<https://bit.ly/3Xzw2qQ>

#engineering #innovation #biotechnology



NSF grants \$22 million for 'extreme microbe' lab collaboration

news.ucr.edu

🌐 ❤️ 🗨️ 54

4 comments · 3 reposts

Bourns College of Engineering at UC Rn @UCRBC · Sep 6 **Promote** ...

🌱 Chemical & Environmental Engineering's Ian Wheeldon is the co-PI for a cutting-edge BioFoundry that will study extreme microbes via a \$22M grant from @NSF — a collab between @UCRCNAS, @ucsantabarbara & @calpolypomona
#ucrbcoe #ucengineering @CEEatUCR



NSF grants \$22 million for 'extreme microbe' lab collaboration

From news.ucr.edu

🗨️ 🔄 ❤️ 1 📊 89 📌 📎

Contacts & Resources



Marketing Department

marketing@engr.ucr.edu



Templates, Logos, etc.

<https://intra.engr.ucr.edu/marketing>



Websites (Profile & Lab)

UCR Profile: <https://systems.engr.ucr.edu/help/ucrprofile>

Website Request: <https://websites.engr.ucr.edu/webmaster@engr.ucr.edu>



Events

marketing@engr.ucr.edu



News

UCR Profile: <https://systems.engr.ucr.edu/help/ucrprofile>

UCR News: <https://news.ucr.edu/>



Workshops

12/4 Brand Guidelines

12/11 Creating Events

12/18 The BCOE Story

1/08 Amplifying with Social Media

Social Media

LinkedIn: [/company/bourns-college-of-engineering-uc-riverside](#)

Instagram: [/ucrbcoe](#)

Twitter: [/ucrbcoe](#)



Marlan and Rosemary Bourns
College of Engineering

Q&A



Marlan and Rosemary Bourns
College of Engineering

An aerial photograph of a university campus at dusk. A tall, slender clock tower stands prominently in the center. Above the tower is a yellow swoosh logo. The text "Thank you." is overlaid in white. The background shows a cityscape and mountains under a twilight sky.

Thank you.

Computing & Technical Support

Tom Gregory
Systems Administrator



Marlan and Rosemary Bourns
College of Engineering

Academic Personnel

Cecilia Gonzalez

Executive Director, Central Personnel Services Unit and
Payroll Online Shared Service Center



Marlan and Rosemary Bourns
College of Engineering

CPSU

Central Personnel Service Unit Academic Personnel, Human Resources, Payroll



Cecilia Gonzalez
Executive Director



Tiffany Lindsey
ECE, Ce-Cert, Dean's Office



Veronica Valenzuela
BIEN, CEE



Angelique Jones
CSE, ME, MSE, MSOL



Sim Mai
BCOE Staff positions,
(Recruitments, Leaves)



Marlan and Rosemary Bourns
College of Engineering

Merit & Promotion Process

Rajiv Gupta

Associate Dean, Academic Personnel

Amrik Singh Poonian Chair in Computer Science



Marlan and Rosemary Bourns
College of Engineering

Features of M&P System

Frequent Evaluation

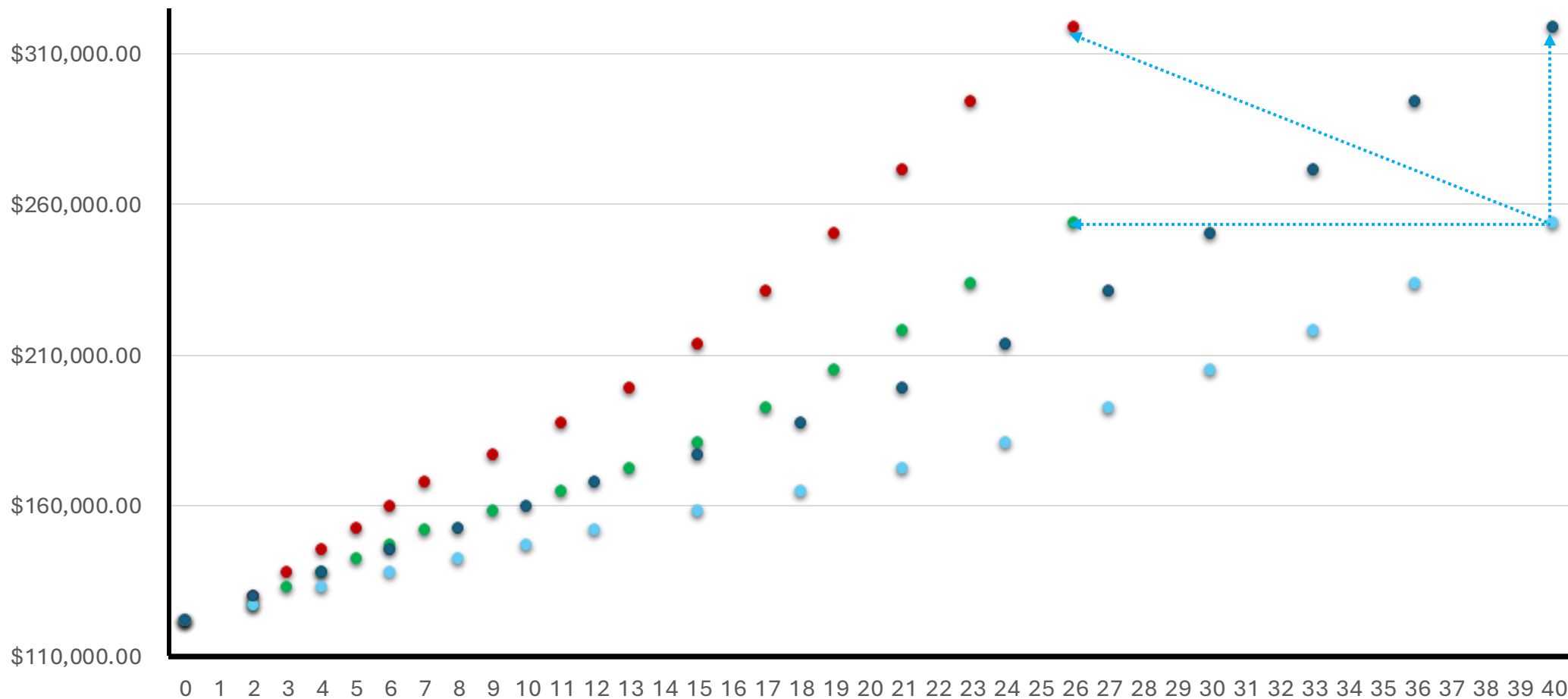
Flexibility

Transparency

Rank and Step System

CHART I – NORMAL TIME IN STEP					
Assistant Professor	Associate Professor	Full Professor		Distinguished Professor Above Scale	Normal Period of Service at Step
Step	Step	Step	Step	No Steps	
I					2 years
II					2 years
III					2 years
IV*					2 years
V	I				2 years
VI	II				2 years
	III				2 years
	IV	I			3 years
	V	II			3 years
		III			3 years
		IV			3 years
		V			3 or more years
			VI		3 or more years
			VII		3 or more years
			VIII		3 or more years
			IX		4 or more years
				no steps/ just merits	4 or more years between merit advancements

Rewards Performance



Evaluation Steps

Department: Evaluation by Peers

Department letter is shared with the candidate

Dean evaluates

Dean's letter may accompany the evaluation

University-Wide Committee: CAP

CAP minutes are added to the file

VPAP & Provost Evaluate the file

VPAP adds a letter

***Notification of decision is accompanied with
all of the above letters providing ample feedback***



Questions?



Marlan and Rosemary Bourns
College of Engineering